



La polo vintage mid-light unisex

Aderente

XXS > 3XL

185 GSM

Dettagli

- Manica a giro
- Costina a maglia piatta su colletto e orlo delle maniche
- Nastro interno in jersey pesante sul retro del collo
- Cannoncino anteriore inserito con 2 bottoni in tinta con il corpo
- Spacco e finitura con travetta sull'orlo della cucitura laterale
- Cucitura con ago singolo sulle spalle
- Orlo inferiore con cucitura stretta a doppio ago

Composition

Shell - Piqué

100% cotone biologico filato e pettinato - , 185.0 GSM

Capo lavato, Capo tinto

Cura

Wash similar colours together, no ironing on print, wash and iron inside out.



Paese di origine

Weaving : Bangladesh

Dyeing : Bangladesh

Assembly : Bangladesh



Organic
Certified by Control Union
CU 919434

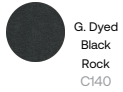


STANDARD
100
2012163
Centexbel

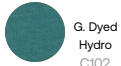
www.oeko-tex.com



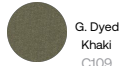
Colors



G. Dyed
Black
Rock
C140

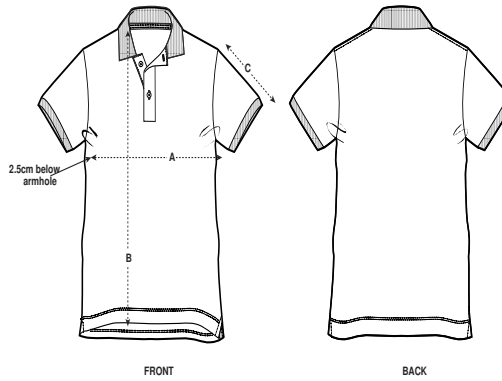


G. Dyed
Hydro
C102



G. Dyed
Khaki
C109

Guida alle taglie



Sizes		XXS	XS	S	M	L	XL	XXL	3XL
A	Half Chest	43	45	48	51	54	57	61	65
B	Body Length	61	64	68	72	74	76	78	80
C	Sleeve Length	17.5	18.5	20	21.5	22	22.5	23	23.5

Imballaggio

Sizes		XXS	XS	S	M	L	XL	XXL	3XL
	Pieces/bag	1	1	1	1	1	1	1	1
	Pieces/box	25	50	50	50	50	50	50	25