



La camicia Oxford da donna

Vestibilità media

XS > XXL

190 GSM

Dettagli

- Collo a punta con cuciture singole
- Stecca del collo
- Cannoncino anteriore con cuciture singole su entrambi i lati
- Spalla avanzata
- Carré posteriore con piega a scatola
- Carré interno in tessuto proprio
- Maniche a giro
- Apertura della manica con un bottone
- Polsino della manica con due bottoni
- Angoli dei polsini arrotondati
- Doppie pieghe alla cucitura del polsino

Composition

Shell - Oxford
100% cotone biologico filato e pettinato - , 190.0 GSM
Capo lavato

Cura

Wash similar colours together, no ironing on print, wash and iron inside out.



Paese di origine

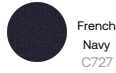
Weaving : Bangladesh
Dyeing : Bangladesh
Assembly : Bangladesh



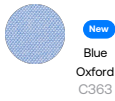
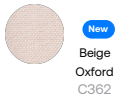
Whites



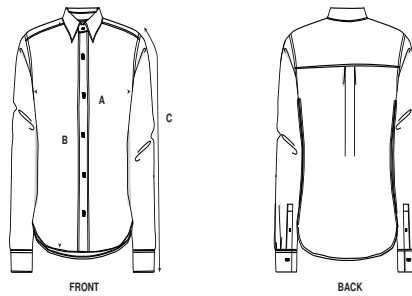
Colors



Shirt Fabric



Guida alle taglie



Sizes		XS	S	M	L	XL	XXL
A	Half Chest	47	50	53	56	59	62
B	Body Length	64.8	66.5	68.5	70.5	72.5	74.5
C	Sleeve Length	58.5	59	60	61	62	63

Imballaggio

Sizes		XS	S	M	L	XL	XXL
	Pieces/bag	1	1	1	1	1	1
	Pieces/box	25	25	25	25	25	25